



SunCooler™ - SunConfig Software

SFT - Smart Fan Technology™

Copyright © 2015, Northwest Renewable Energy Corp. All rights reserved.

Tech support email: support@nwrec.us, phone: (503) 474-3800, website: nwrec.us

Configure

Monitor

Host PC Setup

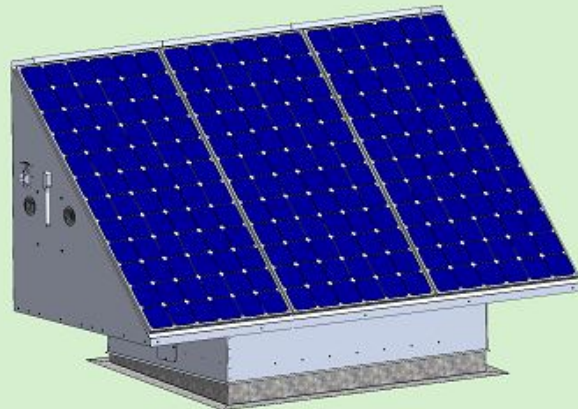
Factory Settings



SC1000



SC2500



SC15000

Admin Passcode

Serial number:

Try Again

Exhaust Induction Destratification Destrat / Fresh Air Night Flush CO2 Mode Time Battery

Manual Mode

Fan Speed

 %

Automatic Mode

Indoor Temp Setpoint

 °F

Allow exhaust even when hotter outside

Allow exhaust even when more humid outside

Max Fan Speed (%)

Enable Interior Humidity Setpoint

Humidity Setpoint (%)

Exhaust when Temp OR Interior Humidity Exceeds Setpoint

Exhaust when Temp AND Interior Humidity Exceed Setpoint

Read Settings from SunCooler

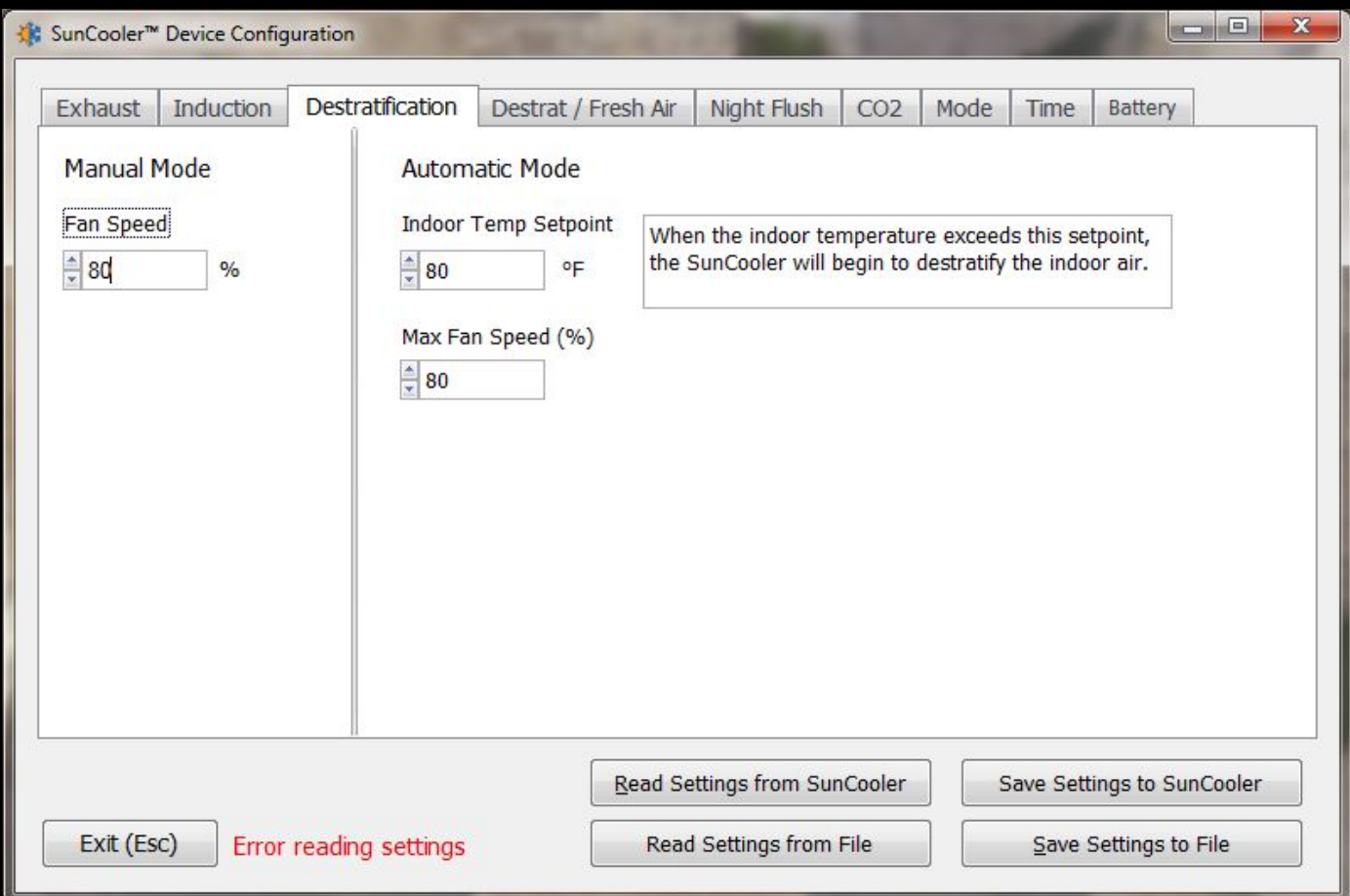
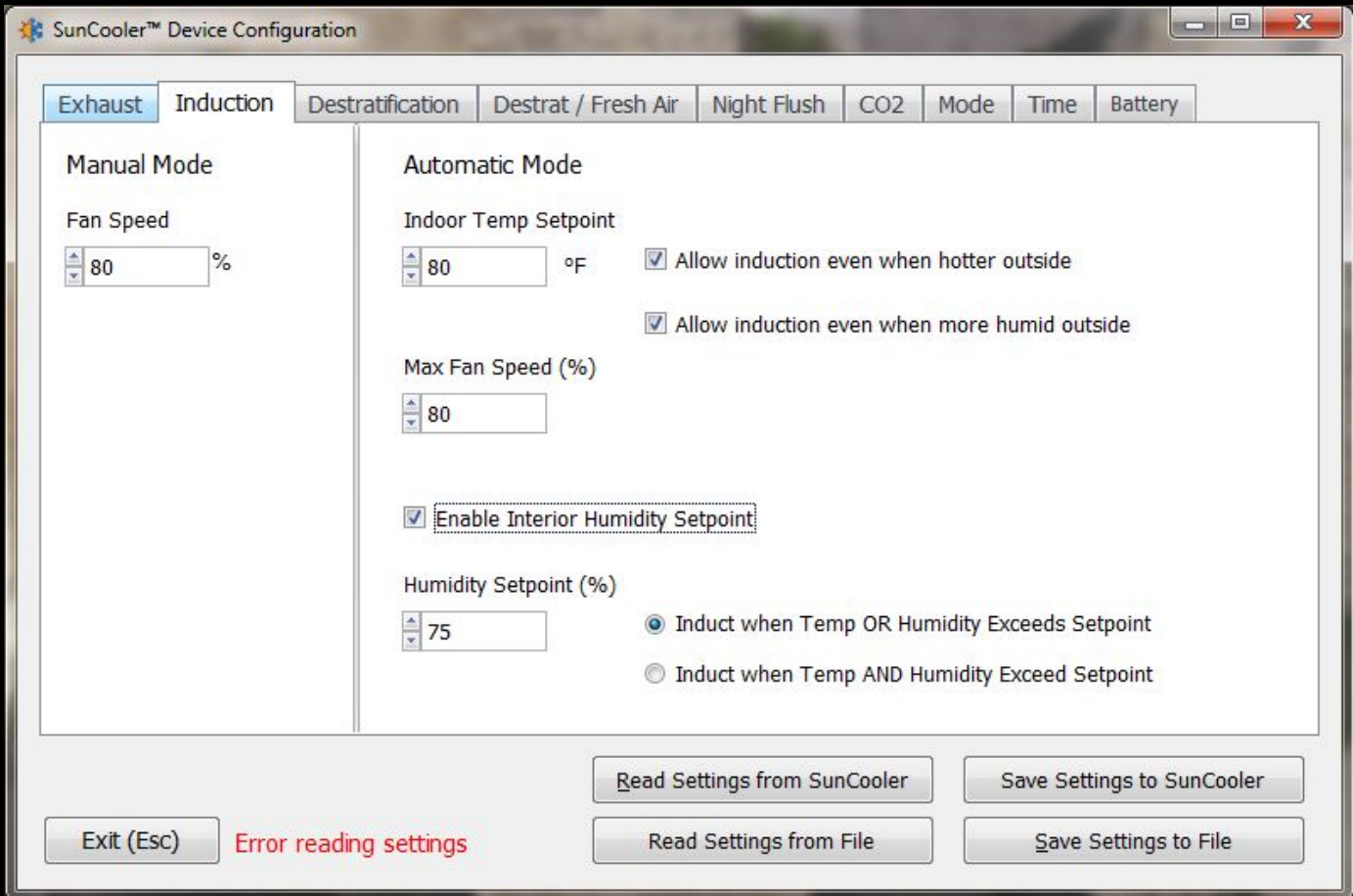
Save Settings to SunCooler

Exit (Esc)

Error reading settings

Read Settings from File

Save Settings to File



SunCooler™ Device Configuration

Exhaust Induction Destratification **Destrat / Fresh Air** Night Flush CO2 Mode Time Battery

Indoor Temp Setpoint Outside Damper Level

°F
 %

Max Fan Speed (%)

Allow induction/destratification even when more humid outside

In destrat / fresh air mode, the outside damper can be partially opened to draw in fresh air while the interior air is being destratified.

 Error reading settings

SunCooler™ Device Configuration

Exhaust Induction Destratification Destrat / Fresh Air **Night Flush** CO2 Mode Time Battery

Enable night flush

Nightflush ONLY mode

Duration

Minutes

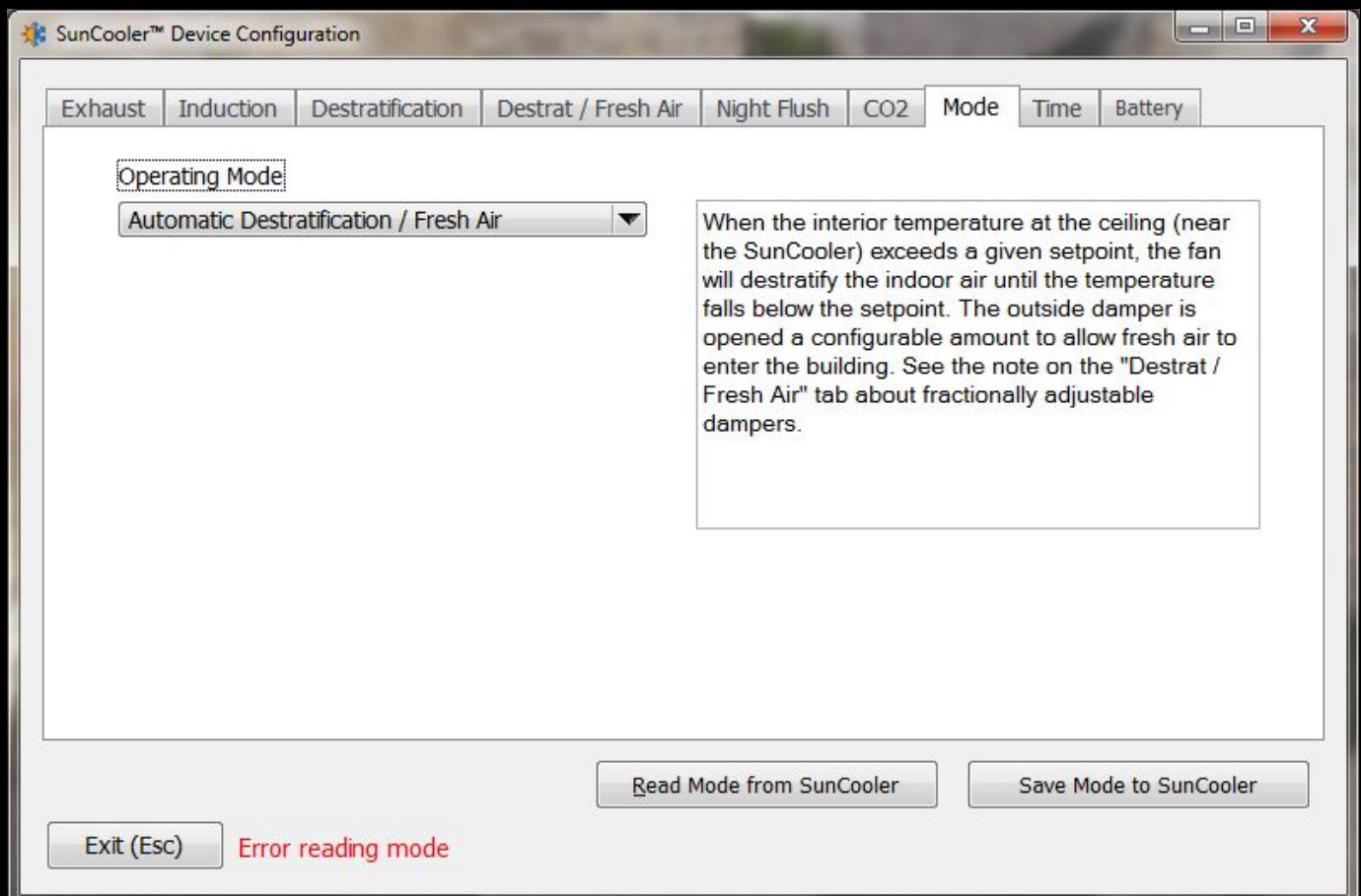
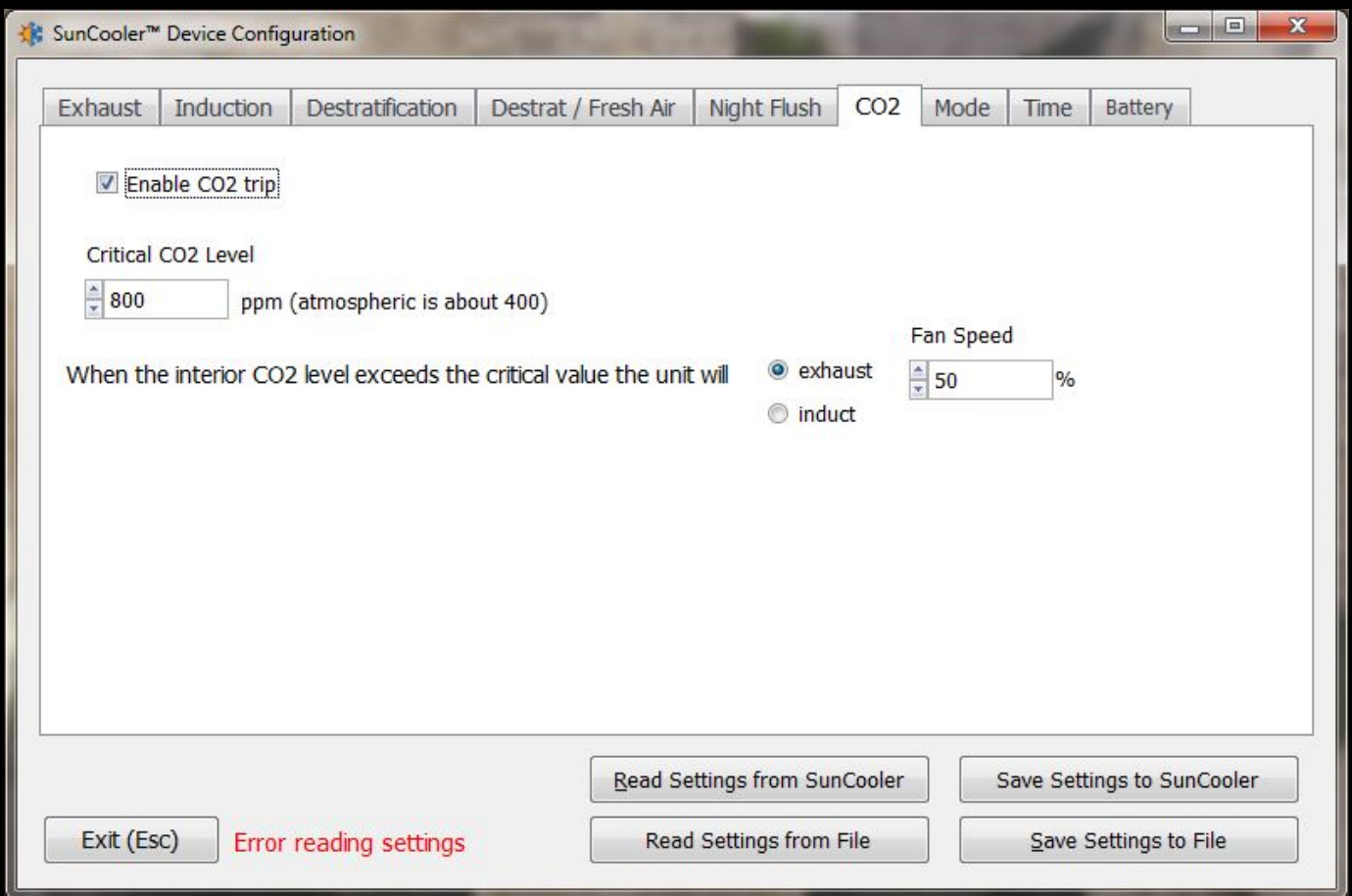
Start time: : ▼

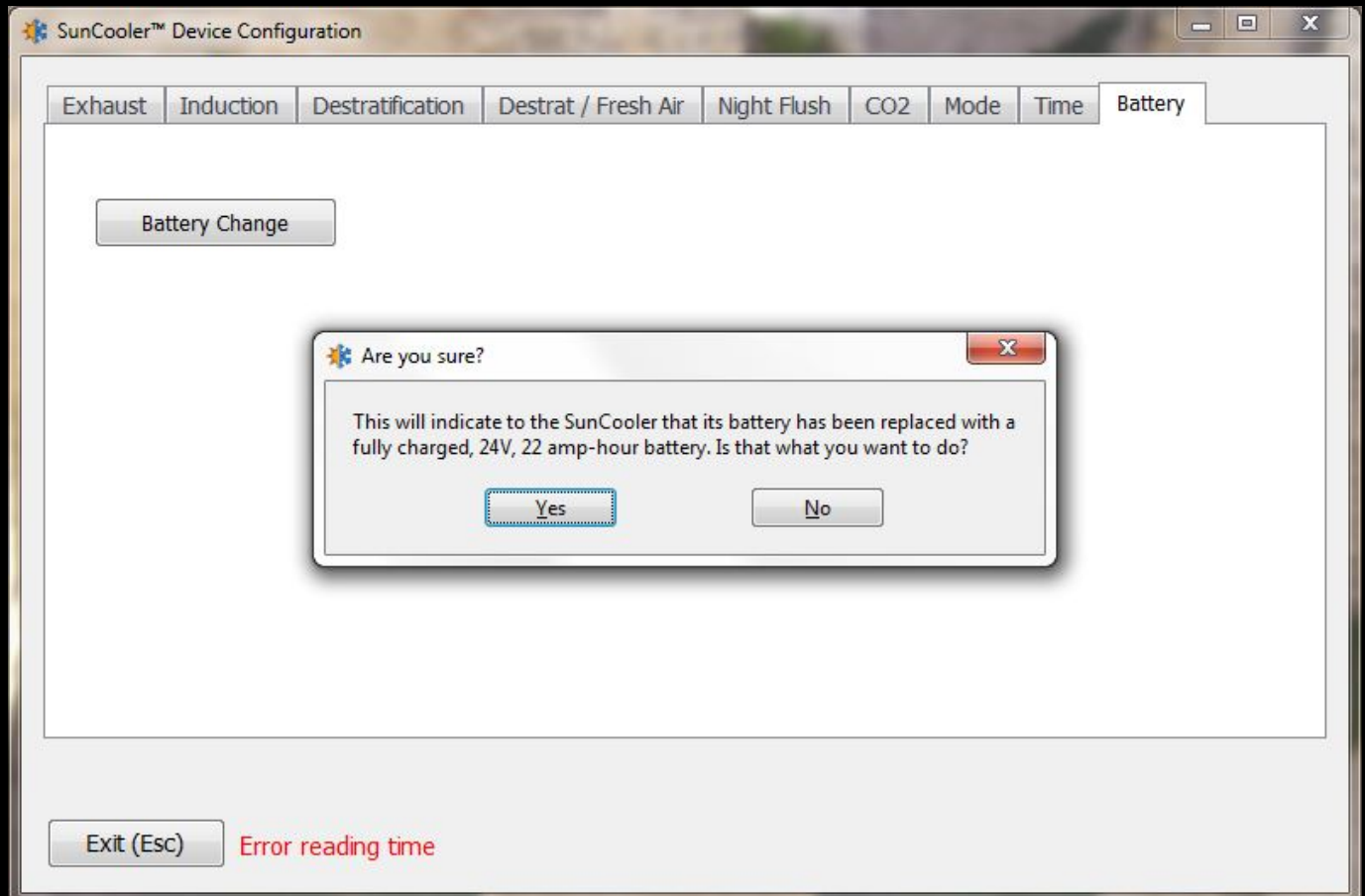
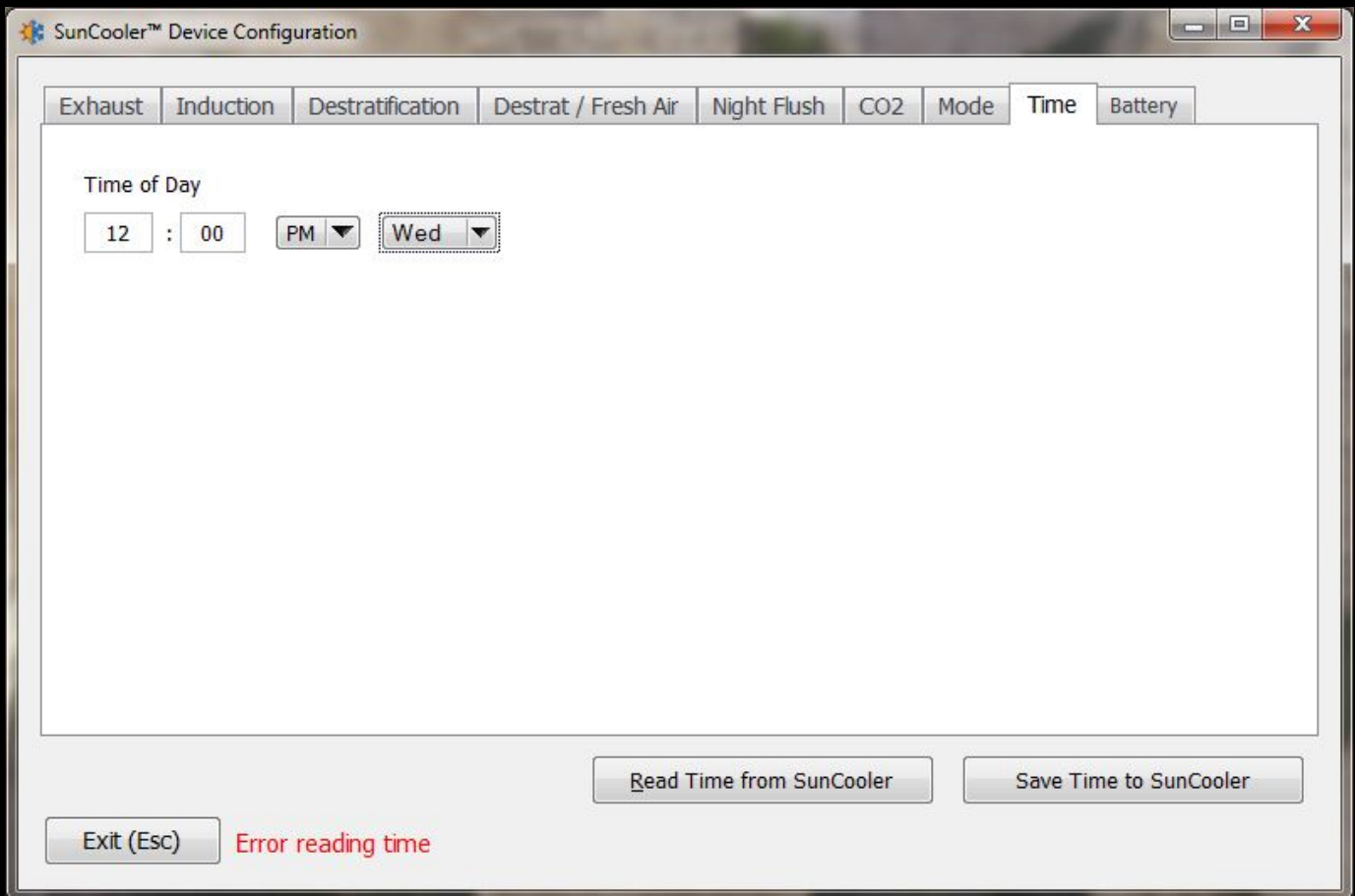
Fan Speed

% Exhaust Induct

If equipped with a battery, the SunCooler can exhaust or induct for a predetermined amount of time at night, drawing cool air into the building. This is called a "night flush". In "nightflush only" mode, the SunCooler will perform no functions other than nightflush and CO2 trip (if enabled). The SunCooler will never nightflush when off.

 Error reading settings





SunCooler™ Dashboard Monitor

Indoor

Temperature: 0.0 °F

Relative Humidity: 0.0 %

CO2: 0 ppm

Outdoor

Temperature: 0.0 °F

Relative Humidity: 0.0 %

Battery

Battery Capacity (Amp-Hours): 0

Battery Charge: 0.00 Amp-Hours, 0.0 %

Battery Current (Discharging): 0.00 Amps

Battery Voltage: 0 Nominal, 0.00 Actual

Battery Cycles: 0

PVPanel

Voltage: 0.00

Status & Time

Mode:

Night flush active

CO2 trip active

12 : 00 : 00 PM Sunday

Continuous Operating Time

Days: 0 Hours: 0 Minutes: 0

Error reading from SunCooler

Automatically Update Every Seconds

Faults

Current

- Low System Voltage
- Bad Battery
- Battery Overtemp
- Control Board Overtemp
- Fan Overcurrent
- Fan Undercurrent

History (All faults since last reset)

- Low System Voltage
- Bad Battery
- Battery Overtemp
- Control Board Overtemp
- Fan Overcurrent
- Fan Undercurrent

Factory Settings

Factory Configuration Functions

Current version: (unknown)

Current version: (unknown)